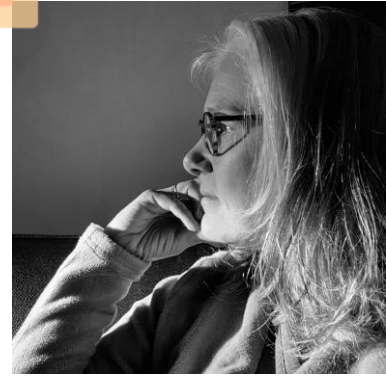


TRUDIE SCHILS

Maastricht University School of Business and Economics
Department of Macro, International and Labour Economics
Tongersestraat 53 / Room A0.15
P.O. Box 616, 6200 MD Maastricht
t.schils@maastrichtuniversity.nl
www.trudieschils.nl
maastrichtuniversity.nl/t.schils



Current positions

- ❖ **Full professor Economics of education** | since 2020
School of Business & Economics / Macro, International & Labour Economics | Maastricht University.
- ❖ **Council Member Dutch Education Council** | since 2023
Independent advisory body on education policy.
- ❖ **Scientific Director OnderwijsMonitor Limburg** | since 2014
Research-practice partnership in education | Maastricht University.

Previous positions

- 2014-2024 **Program leader Kennis-As project Educatieve Agenda Limburg** | Maastricht University.
- 2021-2022 **Member National Platform Perspectief Jongeren** | Ministry of Education, Culture and Science.
- 2018-2022 **Vice-head dept. Macro, International & Labour Economics** | SBE-MILE, Maastricht University.
- 2018-2020 **Associate Professor** | SBE-MILE, Maastricht University.
- 2015-2018 **Associate Researcher** | SBE-MILE, Maastricht University.
- 2008-2015 **Assistant Professor** | SBE-MILE, Maastricht University.
- 2007 **Lecturer** | International School for Humanities & Social Sciences, Amsterdam University.
- 2005-2008 **Postdoctoral Researcher** | Amsterdam Institute of Advanced Labour Studies, Amsterdam University.
- 2005 **Researcher** | Institute of Labour Studies, Tilburg University.
- 2000-2005 **PhD. Student** | Faculty of Social Sciences, Tilburg University.
- 1998-2000 **Junior Lecturer** | Dept. Economics, Maastricht University.
- 1998-1999 **Lecturer** | Hogeschool 's-Hertogenbosch.
- 1998 **Teaching Assistant Development Economics** | Dept. Economics, Tilburg University.
- 1995-1997 **Teaching Assistant Macro Economics** | Dept. Economics, Tilburg University.
- 1994-1996 **Teaching Assistant Statistics** | Dept. Economics, Tilburg University.

Education & training

- 2019 **Fundamentals in Leadership** | Maastricht University.
- 2017 **English Cambridge Proficiency Level (C2-B)** | Maastricht University.
- 2016 **Fast Forward Leadership Development Program** | Maastricht University.
- 2010 **University Teaching Qualification** | Maastricht University.
- 2000-2005 **PhD. Social Sciences** | Tilburg University.
- 1992-1998 **Msc. Economics** | Tilburg University.
- 1990-1992 **Ba. Economics** | Tilburg University.

PhD. supervision

- 2025-... **Suze van Capelleveen** | With Martijn Meeter (Vrije Universiteit Amsterdam), Anne-fleur Kortekaas (Vrije Universiteit Amsterdam) and Tijana Prokic-Breuer (SBE-ROA, Maastricht University).
- 2025-... **Jeanne Olla** | With Carla Haelermans (SBE-ROA, Maastricht University) and Lynn van Vugt (SBE-ROA, Maastricht University).
- 2025-... **Chayenne Smeets** | With Carla Haelermans (SBE-ROA, Maastricht University) and Lynn van Vugt (SBE-ROA, Maastricht University).
- 2023-... **Trinidad Hernandez Recabarren** | With Giulia Piccillo (SBE-MILE, Maastricht University).
- 2023-... **Mirte Dikmans** | With Tijana Prokic-Breuer (SBE-ROA, Maastricht University) and Ilja Cornelisz (dept. of Educational & Family Studies, Vrije Universiteit Amsterdam).
- 2023-... **Vera Ronda** | With Tijana Prokic-Breuer (SBE-ROA, Maastricht University) and Suzanne de Leeuw (SBE-ROA, Maastricht University).
- 2022-... **Jacqueline Charpentier** | With Ellen Bastiaens (EDLAB, Maastricht University).
- 2021-... **Brian Korthout** | With Bart Golsteyn (SBE-MILE, Maastricht University) and Giulia Piccillo (SBE-MILE, Maastricht University).
- 2021-... **Ankie van de Broek** (external PhD. candidate, teacher at teacher academy) | With Paul Hennissen (Fontys-Zuyd University of Applied Sciences).
- 2021-... **Annemie van Loo** (external PhD. candidate, primary school teacher) | With Paul Hennissen (Fontys-Zuyd University of Applied Sciences).
- 2020-... **Lars Goertzen** (external PhD. candidate, primary school teacher) | With Sylvia Heeneman (FHML, Maastricht University) and Barbara Piskur (Zuyd Hogeschool and UHasselt).
- 2014-... **Djoerd de Graaf** (external PhD. candidate (researcher at SEO Amsterdam) | With Lex Borghans (SBE-MILE, Maastricht University)
- 2021-2025 **Marcel Graus** (external PhD. candidate, teacher at teacher academy) | With Paul Hennissen (Fontys-Zuyd University of Applied Sciences). Graduated 29-10-2025: Teacher identity learning – Awareness of the teacher you are.
- 2018-2024 **Mélanie Monfrance** | With Carla Haelermans (SBE-ROA, Maastricht University). Graduated 14-11-2024: Exploring non-cognitive skills and inequality through the magnifying lens of a pandemic.
- 2019-2023 **Johanna Schmitz-Peiffer** (external PhD. candidate) | With Annika Nübold (FPN, Maastricht University). Graduated 27-09-2023: The power of personality: The role of the big five for adolescents' career choices and expectations.
- 2014-2019 **Annemarie Neeleman** | With Lex Borghans (SBE-MILE, Maastricht University) and Sietske Waslander (TIAS School for Business & Society, Tilburg University). Graduated 28-06-2019: School autonomy in practice: school intervention decision-making by Dutch secondary school-leaders.
- 2011-2018 **Eva Feron** | With Bas ter Weel (SBE-MILE, Maastricht University). Graduated 29-06-2018: The role of cognitive tests and teachers in the transition from primary to secondary education.
- 2013-2018 **Caroline Wehner** | With Lex Borghans (SBE-MILE, Maastricht University). Graduated 25-05-2018: Too scared to achieve; the relation between neuroticism, conscientiousness and socioeconomic outcomes.
- 2013-2017 **Stefa Hirsch** | With Lex Borghans (SBE-MILE, Maastricht University). Graduated 11-01-2017: Measurement in education: test scores and beyond.
- 2011-2014 **Benedikt Vogt** | With Bas ter Weel (SBE-MILE, Maastricht University). Graduated 17-04-2015: The Role of Incentives, Preferences and Personality in Decision Making.
- 2007-2009 **Heejung Chung** | With Ton Wilthagen (Reflect institute, Tilburg University) and Evert Verhulp (Faculty of Law, University of Amsterdam). Graduated 13-11-2009: Flexibility for whom? Working time flexibility practices of European companies.

Other professional activities

- 2026-... Scientific Advisory board | CITO.
- 2025-... Scientific expertgroup Techkwadraat | National Growth Fund project.
- 2024-... Scientific expert team Masterplan Basisvaardigheden | Ministry of Education.
- 2024-... Trainer evidence-informed education | Expertschools Ontwikkelkracht.
- 2023-... EDLAB Sounding Board | EDLAB, Maastricht University.
- 2023-... Researcher Taallab | Education Lab, SBE-ROA, Maastricht University.
- 2026 PhD. Assessment Committee Willem de Cort | Faculty of Economics & Business, KU Leuven.
- 2025 PhD. Assessment Committee Elke Claes | SBE-ROA, Universiteit Maastricht.
- 2025 PhD. Assessment Committee Mariët Boogaart (vz) | SBE-MILE, Universiteit Maastricht.
- 2025 PhD. Assessment Committee Babs Jacobs | SBE-ROA, Universiteit Maastricht.
- 2025 Focusgroup Knowledge Agenda | NRO.
- 2025 PhD. Assessment Committee Anouk Mesch | Wageningen Universiteit.
- 2025 PhD. Assessment Committee Esther Geurts | FHML, Universiteit Maastricht.
- 2024 PhD. Assessment Committee Lianne Vonk | FHML, Maastricht University.
- 2024 PhD. Assessment Committee Michele Gonzalez Amador | UNU-Merit, Maastricht University.
- 2024 PhD. Assessment Committee Ferdi Widiputera | UNU-Merit, Maastricht University.
- 2024 PhD. Assessment Committee Per Bles | SBE-ROA, Maastricht University.
- 2024 PhD. Assessment Committee Lies van der Kuilen | SBE-ROA, Maastricht University.
- 2024 PhD. Assessment Committee Niels van der Baan | SBE-ERD, Maastricht University.
- 2023 PhD. Assessment Committee Cintia Granja (chair) | UNU-Merit, Maastricht University.
- 2023 PhD. Assessment Committee Sylvia Palmaccio | Faculty of Economics & Business, KU Leuven.
- 2023 Selection Committee Head of Department MILE | SBE, Maastricht University.
- 2023 PhD. Assessment Committee Lynn van Vugt | SBE-ROA, Maastricht University.
- 2023 Selection Committee Head of Department DAD | SBE, Maastricht University.
- 2021-2023 OMT-Onderwijs | Group of scientists advising the Ministry on dealing with the consequences of COVID-19 on education.
- 2021-2022 Chair Program Council Studium Generale Maastricht | Maastricht University.
- 2018-2022 Taskforce Learning and Innovation | Maastricht University.
- 2022 Selection Committee Professor Effective Learning | dept. Online Learning & Instruction, Open University.
- 2022 PhD. Assessment Committee Irina Pokhilenko | FHML, Maastricht University.
- 2022 PhD. Assessment Committee Annelore Verhagen (chair) | SBE-MILE, Maastricht University.
- 2022 PhD. Assessment Committee Mariana Pimentel Tavares | SBE-MILE, Maastricht University.
- 2022 PhD. Assessment Committee Francois Molin (chair) | SBE-ROA, Maastricht University.
- 2018-2021 Chair SBE tenure track committee | SBE, Maastricht University.
- 2021 PhD. Assessment Committee Kim van Broekhoven (chair) | SBE-ROA, Maastricht University.
- 2021 PhD. Assessment Committee Gloria L. Bernal Nisperuza | UNU-MERIT | Maastricht University
- 2021 PhD. Assessment Committee Olga Meshcheriakova | SBE-MILE, Maastricht University.
- 2020-2021 Scientific Advisory Council National Report 'Education in the Netherlands 2021' | Dutch Inspectorate of Education.
- 2018-2021 Program Council Studium Generale Maastricht | Maastricht University.
- 2020 PhD. Defence Committee Gillian McFarland | UNU-MERIT, Maastricht University.
- 2020 PhD. Defence Committee Cécile Magnee | SBE-ROA, Maastricht University.
- 2020 PhD. Defence Committee Maria Cotofan | dept. Economics, Erasmus University Rotterdam.
- 2020 Selection Committee Director ROA | SBE, Maastricht University.
- 2020 Selection Committee Director EDLAB | Maastricht University.
- 2020 Selection Committee Professor International Economics | SBE-MILE, Maastricht University.
- 2019 PhD. Assessment committee Corrie Urlings | SBE-MILE, Maastricht University.

- 2019 Selection Committee Professor Health, Education and Employment | SBE-ROA, Maastricht University.
- 2019 PhD. Assessment committee Maria Ferreira | SBE-ROA, Maastricht University.
- 2017-2019 Research theme leader 'Learning and Work' | Graduate School Maastricht University School of Business & Economics (GSBE, together with Didier Fouarge).
- 2018 PhD. Assessment Committee Luc Benda | dept. Public Administration and Sociology, Erasmus University Rotterdam.
- 2018 PhD. Assessment Committee Stan Vermeulen | SBE-AE2, Maastricht University.
- 2017-2018 Organising Committee VELON conference 2018
- 2013-2018 Advisory Committee 'Academic Workplace of Education' | Maastricht University and Dutch Inspectorate of Education.
- 2017 Support Team on SBE Premaster program | Maastricht University.
- 2016 Shadow Strategic Team on SBE HR policy | Maastricht University.
- 2016 Strategic Support Team on SBE Master portfolio | Maastricht University.
- 2015 PhD. Defence Committee Roxanne Korthals | SBE-ROA, Maastricht University.
- 2014 Strategic Committee UM HR policy | Maastricht University.
- 2009-2014 Program leader Kaans Education Research | SBE-AE2, Maastricht University.
- 2013 Supervision Committee 'Effectiveness of primary schools' | project by CPB Netherlands Bureau for Economic Policy Analysis.
- 2013 PhD. Assessment Committee Ulf Zöllitz | SBE-AE2, Maastricht University.
- 2013 PhD. Defence Committee Charlotte Büchner | SBE-ROA, Maastricht University.
- 2013 PhD. Defence Committee Tyas Prevoo | SBE-AE2, Maastricht University.
- 2012 PhD. Defence Committee Ron Diris | SBE-AE2, Maastricht University.
- 2009-2012 Academic Supervisor Faculty Introduction | SBE, Maastricht University.
- 2011 PhD. Defence Committee Henri Espinoza | School of Governance, Maastricht University.
- 2008-2011 Board Nederlands Instituut voor Sociale Zekerheid
- 2008-2011 Nederlandse Vereniging voor Onderzoek in Arbeidsmarktverhoudingen
- 2010 PhD. Assessment Committee Florian Tomini | School of Governance, Maastricht University.
- 2001-2002 PhD. Council | Faculty of Social Sciences, Tilburg University.

Funded projects

- 2026 Hoes veur 't Limburgs | Province of Limburg. Led by Mark Pluymakers (Zuyd Hogeschool).
- 2026 Fork2Future EAT-Lancet | Sustainable UM: Research Call for Transformative Solutions. Led by Michalis Moatsos (SBE-MILE, Maastricht University).
- 2026 Development Theory of Change expertschools Ontwikkelkracht | Ministry of Education, Culture and Science. With Martijn Meeter (Vrije Universiteit Amsterdam) and Tijana Prokic-Breuer (SBE-ROA, Maastricht University).
- 2026 Guide for succesfull implementation of evidence-informed programs in primary education | NKO & Ontwikkelkracht. With Tijana Prokic-Breuer (SBE-ROA, Maastricht University), Anneluc van der Vegt (NKO) and Eva Naaijken (schoolleader primary school and NKO).
- 2026-... Cost effectiveness study Partnering4Change; SROI-analysis | ZonMW. Led by Barbara Piskur (Zuyd Hogeschool).
- 2024-... Doorstroom in een kansrijk stelsel | NRO. Led by Sanne van Wetten (SBE-ROA, Maastricht University).
- 2024-... Doorstroom in een kansrijk stelsel | NRO. Led by Eddy Denessen (Radboud University Nijmegen).
- 2024-... Effectiveness School & Omgeving | NRO.
- 2024-... Building Resilient Individuals through Effective Gradual Educational Transitions (BRIDGE) | EU Horizon: CL2-2024-Transformations-01. Led by Kristof de Witte (KULeuven).
- 2024-... Monitoring Rijke Schooldag Roermond | Gemeente Roermond.

- 2024-... [OnderwijsMonitor Limburg](#) | Schoolboards primary and secondary education, NCO and University of Maastricht.
- 2023-... [Educatieve Agenda Parkstad Monitor](#) | Stadsregio Parkstad.
- 2023-... [Regionaal Aansluitingsplan](#) | Ministry of Education, Culture and Science. With Denise Villerius (Academic Affairs, Maastricht University) and Ellen Bastiaens (EDLAB, Maastricht University).
- 2023-... [Kansrijk determineren](#) | NOLAI (National Lab AI in Education). Led by Sanne van Wetten (SBE-ROA, Maastricht University).
- 2023-2024 [Monitoringsonderzoek subsidieregelingen heterogene brugklassen en capaciteitentesten](#) | Ministry of Education, Culture and Science. Led by Tyas Prevoo (SEO Economic Research).
- 2023 [Werken op basis van een kwaliteitscyclus in het onderwijs](#) | Ministry of Education, Culture and Science: Gelijke Kansen Alliantie.
- 2023 [Analyse doorverwijzing naar speciaal Onderwijs](#) | Samenwerkingsverband 3102. Led by Lynn van Vugt (SBE-ROA, Maastricht University).
- 2023 [GKA Parkstad Limburg](#) | Ministry of Education, Culture and Science: Gelijke Kansen Alliantie. Led by Service Science Factory Maastricht University.
- 2021-2023 [E-ADAPT \(Big Questions Need Integrated Answers: A European Theory-Practice Collaboration for Adaptive Teaching\)](#) | German Federal Ministry of Education and Jacobs Foundation. Led by Ulrich Trautwein (Tübingen University).
- 2021 [Impact research Social Agenda Limburg](#) | Province of Limburg. With Maria Jansen (PI, FHML, Maastricht University), Annemarie Künn (ROA), Daan Westra (Vektris), and Regional Health Service (GGD).
- 2021-2023 [Learning for vulnerable young people: the combination of digital skills and differentiated learning as a necessity for education in the Corona era to ensure social inclusion \(SKILLS4YOU\)](#) | EU Interreg Belgium-Netherlands. Led by Diana Dolmans (FHML, Maastricht University).
- 2021-2022 [Knowing yourself: Improving children's self-regulation by increasing awareness of own talents](#) | NRO Short-term Practice Oriented Research (PPO). Led by Sandra Bolkenbaas (Lentiz school board).
- 2020 [Jugendliche und die Coronazeit – eine Untersuchung im DT.-NL Grenzgebiet \(JUNCO\)](#) | Interreg Germany-Netherlands. With Mark Levels (SBE-ROA, Maastricht University), Michael Weigand (Lern- und Bildungsakademie Monchengladbach), Dirk Baier (Institut für Delinquenz und Kriminalprävention Zürich) and Lothar Janssen.
- 2020-2026 [Impact of Activities in Gifted Education \(IMAGE\)](#) | NRO Impactresearch Passend Onderwijs. Led by Marjolijn van Weerdenburg (RATIO, Radboud University Nijmegen).
- 2020-2025 [Extraordinary research Chair](#) | Solberg-Verlinden Foundation.
- 2019 [Bilingual Education in lower vocational education](#) | Province of Limburg. With Service Science Factory/UMIO (Maastricht University).
- 2019 [Preparation Call for Proposals on interventions in education for gifted students](#) | NRO. With Djoerd de Graaf (SEO), Desirée Houkema (NTCN) and Evelyn Kroesbergen (Radboud University Nijmegen).
- 2019 [SCRAPE \(Sociale media Communicatie & Regionale Analyse voor Provinciale Expertise\)](#) | Province of Limburg. Led by Giulia Piccillo (SBE-MILE, Maastricht University).
- 2018-2023 [Long-term effects of educational programmes for \(highly\) gifted elementary school kids](#) | NRO. With Djoerd de Graaf (SEO Economic Research) and Desirée Houkema (NTCN).
- 2018-2020 [Educatieve Agenda Limburg](#) | Province of Limburg and Maastricht University.
- 2016 [Early school-leavers in RMC39](#) | Stichting Voortgezet Onderwijs Parkstad Limburg. With Ron Diris (SBE-AE2, Maastricht University).
- 2015 [Experimentalism in Education](#) | Ministry of Education, Culture and Science. With Lex Borghans (SBE-AE2, Maastricht University) and Inge de Wolf (Inspectorate of Education).

- 2014-2018 [Educatieve Agenda Limburg](#) | Province of Limburg and Maastricht University. With team Educatieve Agenda Limburg.
- 2014 [Differentiation in the classroom: evaluation of a program targeted at personalized learning in secondary education](#) | NRO.
- 2013 [Strategic behavior among elementary schools](#) | Dutch Inspectorate of Education. With Lex Borghans (SBE-AE2, Maastricht University) and ITS Nijmegen.
- 2013 [Get more out of it: how to use student tracking systems effectively](#) | School aan Zet.
- 2012-2015 [Gifted pupils: who are they and what do they do?](#) | NWO/PROO. With Lex Borghans (SBE-AE2, Maastricht University).
- 2011 [Disentangling test performance](#) | Network of Social Innovation (NSI).
- 2011-2014 [Data driven education](#) | Ministry of Education, Culture and Science. With Lex Borghans (SBE-AE2, Maastricht University), Paul Jungbluth (SBE-AE2, Maastricht University) and Raoul Haenbeukers (SBE-AE2, Maastricht University).
- 2010-2014 [Do what I can: Does self-reflection increases student performance?](#) | OnderwijsBewijs of Ministry of Education, Culture and Science.
- 2010-2012 [Data driven education in secondary education \(Inventaar\)](#) | Province of Limburg and school board secondary education. With Paul Jungbluth (SBE-AE2, Maastricht University).

Fellowships, nominations, and visits

- 2023 Leadership award | nomination School of Business and Economics, Maastricht University.
- 2019 Societal Impact Jury Award Maastricht University School of Business and Economics, for Educatieve Agenda Limburg (with team).
- 2016 Employee of the year | nomination Maastricht University.
- 2015 Business Development Knowledge Transfer award | nomination School of Business and Economics, Maastricht University (with Lex Borghans).
- 2014-... Visiting researcher LEAD Graduate School and Research Network | University of Tübingen.
- 2010-... Fellow Research Centre for Education and the Labour Market | Maastricht University.
- 2010 Excellent Educator in Master Education Award | nomination School of Business and Economics, Maastricht University.
- 2009-2017 Fellow Network Social innovation | Maastricht University.
- 2008-2016 Fellow Amsterdam Institute for Advanced Labour Studies | Amsterdam University.
- 2006-2008 Fellow Network for European Social Policy Analysis.
- 2001-2003 Fellow European Panel Analysis Group, EU 5th Framework Dynamics of Social Change in Europe.

Publications

International Journals or books

- [Usefulness and Application of a Co–designed Formative Assessment Practice Perceived by Teachers in Primary Education](#) | with Lars Goertzen, Barbara Piskur & Sylvia Heeneman. *Journal of Formative Design in Learning*, conditionally accepted, 2026.
- [Parents, Teachers, and Policy Makers in Educational Interventions for Gifted Students: Systematic Review Study](#) | with Jessica Vergeer, Marjolijn van Weerdenburg & Anouke Bakx. *Acta Psychologica*, Accepted for publication, 2026.
- [Food for thought? The effects of the Healthy Primary School of the Future on children’s educational outcomes](#) | with Bo van Engelen, Marla Hahnraaths, Bjorn Winkens, and Onno van Schayck. *Plos One*, Accepted for publication, 2026.
- [Teachers in gifted education: Their perceptions of involvement of and interacting with parents, school leaders, and other teachers](#) | with Jessica Vergeer, Marjolijn van Weerdenburg & Anouke Bakx. *Gifted Child Quarterly*, 70(1), 2026.

- The impact of formative assessment on pupil academic achievement: An empirical study of the effects of a formative assessment program that was co-designed in a teacher community | with Lars Goertzen, & Sylvia Heeneman. *Learning and Instruction*, 99(102153), 2025.
- School Leaders in gifted education: Their perceptions of involvement of and interacting with parents, teachers, and other school leaders | with Jessica Vergeer, Marjolijn van Weerdenburg & Anouke Bakx. *Education Sciences*, 15(3), 2025.
- Effect of summer schools: who benefits the most? | with Melanie Monfrance & Carla Haelermans. *Plos One*, 19(4), 2024.
- Co-designing formative assessment practices: A collaboration between elementary school teachers and researchers to conceptualize and implement formative assessment as a unified practice | with Lars Goertzen & Sylvia Heeneman. *Teaching and Teacher Education*, 134, 2023.
- Easing the transition: Do talent lessons and talent talks support students' self-regulated learning skills in the transition from primary to secondary education? | with Jorrick Beckers, Sandra Bolkenbaas, Anne-Roos Verbree, Tamara van Gog & Anique de Bruin. *Frontiers in Education*, 8, 2023.
- Who is considered gifted from a teacher's perspective? A representative large-scale study | with Jessika Golle, Lex Borghans & Norman Rose. *Gifted Child Quarterly*, 67(1), 64-79, 2023.
- Who benefits from attending the higher track? The effect of track assignment on skill development and the role of relative age | with Maria Cotofan & Ron Diris. *Journal of Human Capital*, 16(2), 273-302, 2022.
- Literacy skills of bidialectal primary school children compared to their Dutch speaking peers in Dutch Limburg: Spelling and reading proficiencies | with Leonie Cornips, Jetske Klatter Folmer & Romy Roumans. Chapter in *Handbook of Literacy in Diglossia and Dialectal Contexts: Psycholinguistic and Educational Perspectives*, edited by E. Saiegh-Haddad, L. Laks, & C. McBride, Springer International, 2022.
- Disentangling Aspects of Teacher Identity Learning from Reflective Blogs: the Development of a Category System | with Marcel Graus, Ankie van de Broek & Paul Hennissen. *Teaching and Teacher Education*, 111, 2022.
- When academic achievement (also) reflects personality: Using the Personality-Achievement-Saturation-Hypothesis (PASH) to explain differential associations between achievement measures and personality traits | with Nicholas Hübner, Marion Spengler, Benjamin Nagengast, Lex Borghans & Ulrich Trautwein. *Journal of Educational Psychology*, 114(2), 326–345, 2022.
- Track placement and the development of cognitive and non-cognitive skills | with Roxanne Korthals & Lex Borghans. *Education Economics*, vol. 30(5), 540-559, 2022.
- Who are the low Educational Achievers? An Analysis in Relation to Gender, Emotional Stability and Conscientiousness | with Caroline Wehner. *Applied Economics*, 2021, 53(46), 5354-5368.
- An economic approach to modeling personality | with Lex Borghans. Chapter in *Measuring and Modeling Persons and Situations*, edited by D. Wood, S. Read, P.D. Harms, & A. Slaughter, Elsevier Science, 2021.
- A randomized field experiment using self-reflection on school behavior to help students in secondary school reach their performance potential | with Eva Feron. *Frontiers in Psychology – Personality and Social Psychology*, 11(1356), 1-18, 2020.
- Positive social relationships with peers and teachers as moderators of the Big-Fish-Little-Pond Effect | with Franziska Schwabe & Roxanne Korthals. *Learning and Individual Differences*, 70, 21-29, 2019.
- The Healthy Primary School of the Future: Study protocol of a quasi-experimental study | with Maartje Willeboordse, Maria Jansen, Simone van den Heijkant, Andrew Simons, Bjorn Winkens, Renate de Groot, Nina Bartelink, Stef Kremers, Patricia van Assema, Hans Savelberg, Elise de Neubourg, Lex Borghans, Karien Coppens, Renate Dietvorst, Rankie ten Hoopen, Fons Coomans, Saskia Klosse, Martien Conjaerts, Marije Oosterhoff, Manuela Joore, Isabel Ferreira, Peter Muris, Hans Bosma, Henna Toppenberg & Onno van Schayck. *BMC Public Health*, 16(1), 2016.
- Does the teacher beat the test? The additional value of teacher assessment in predicting student ability | with Eva Feron & Bas ter Weel. *De Economist*, 164(4), 391-418, 2016.

- Experimentalism in Dutch education policy | with Lex Borghans & Inge de Wolf. In Burns, Tracey & Florian Köster (eds.), *Governing Education in a Complex World*, Educational Research and Innovation, OECD Publishing, Paris, 2016.
- The socioeconomic patterning of perceived stress and hair cortisol in Dutch 10-12 year olds | with Hans Bosma, Bart Golsteyn, Danielle Groffen, Tobias Stalder, Elena Syurina, Lex Borghans & Frans Feron. *International Journal of Public Health and Epidemiology*, 4(8), 195-197, 2015.
- Non-standard employment patterns across occupations in the Netherlands | with Anne Gielen. In Eichhorst, Werner & Paul Marx (Eds.), *Non-standard employment in post-industrial labour markets: an occupational perspective*, Cheltenham: Edward Elgar, Chapter 3, 52-89, 2015.
- Gender gaps in primary school achievement: A decomposition into endowment and returns to IQ and non-cognitive factors | with Bart Golsteyn. *Economics of Education Review*, 41, 176-187, 2014.
- Why do low-educated workers invest less in further training? | with Didier Fouarge & Andries de Grip. *Applied Economics*, 45(18), 2587-2601, 2013.
- Sectoral variation in collectively agreed employment protection: evidence from Dutch flexicurity | with Hester Houwing. *European Journal of Industrial Relations*, 16(2), 137-152, 2010.
- The labour market triangle: Employment protection, unemployment compensation and activation in Europe | with Paul de Beer (eds.). Cheltenham: Edward Elgar, 2009.
- The effects of early retirement incentives on the training participation of older workers | with Didier Fouarge. *Labour*, 23, 85-109, 2009.
- Early retirement in Germany, the Netherlands and the United Kingdom: a longitudinal analysis of individual factors and institutional regimes | *European Sociological Review*, 24(3), 315-329, 2008.
- Early Retirement Patterns in Europe, A Comparative Panel Study | Dissertation Tilburg University, Amsterdam: Dutch University Press, 2005.
- Labour Market Mobility Patterns | with Ruud Muffels. In Berthoud, Richard & Maria Iacovou. *Social Europe: Living Arrangements and Welfare States*, Edward-Elgar, 2004.
- Dutch Journals or books*
- Ondersteunen leerlingen voor beter welzijn | with Jacqueline Charpentier and Ellen Bastiaens. *Didactief*, no. 1-2, 2026.
- Evidence-informed werken aan onderwijsverbetering: OnderwijsMonitor Limburg | *Magazine Gelijke Kansen Alliantie - School en Omgeving*, Den Haag: Ministerie van Onderwijs, Cultuur en Wetenschap, 2024.
- Voltijds hoogbegaafdheidsonderwijs in de buurt verhoogt slagingskans op het vwo | with Djoerd de Graaf, Henri Bussink & Desirée Houkema. *TPEdigitaal*, 17(1), 1-8, 2023.
- Niet-cognitieve vaardigheden tijdens COVID-19: Een onderzoek onder leerlingen in het voortgezet onderwijs | with Mélanie Monfrance & Carla Haelermans, *Pedagogische Studiën*, 99(3), 161-182, 2022.
- Gelijk op naar het hoger onderwijs? | Chapter in Anne Gielen, Bas Ter Weel & Dinand Webbink (eds), *Ongelijk Nederland - Preadviezen 2021*, Economisch Statistische Berichten, 2021.
- Schoolprestaties Limburgse basisschoolleerlingen door eerste lockdown flink geraakt | with Olga Meshcheriakova, Lex Borghans & Raoul Haenbeukers. *Economisch Statistische Berichten*, December 2020. Also in *Didactief*, 2020.
- Een plusklas voorkomt onderpresteren in het voortgezet onderwijs | with Djoerd de Graaf, Henri Bussink & Desirée Houkema. *Economisch Statistische Berichten*, 2020. (#5 most read articles in this journal in 2020).
- Wat is de invloed van dialect op schoolprestaties? | with Leonie Cornips, Elma Blom & Jos Feron. *Beter begeleiden*, 2020.
- VWO, of toch naar de HAVO? | with Ron Diris & Marjolein Muskens. *Didactief*, 2019.
- Sociale ongelijkheid in het onderwijs is hardnekkig | with Lex Borghans & Ron Diris. *Economisch Statistische Berichten*, 103(4768), 540-543, 2018. Also in *Didactief*, 2019.
- Onderwijsplannen van de nieuwe regering: kansen, meten en proberen | with Lex Borghans. *TPE Digitaal*, vol 11(3), 1-5, 2017.

Samen onderzoeken en leren: onderzoekssamenwerking tussen onderwijspraktijk, wetenschap en beleid | with Esmee Jonk, Raoul Haenbeukers, Olaf van Egdome, Guido Timmermans, Henk Janssen & Gerlach van Wersch. *SchoolManagement Totaal*, September 2017, 28-31, 2017.

Armoede maakt verschil | with Esmee Jonk & Inge de Wolf, *Didactief*, 2017.

Gelijke kansen op excellentie | with Tyas Prevoo & Lex Borghans, *Didactief*, 2017.

Lessen uit experimenten in onderwijsbeleid | with Lex Borghans & Inge de Wolf. *Economisch Statistische Berichten*, 101(4732), 280-281, 2016.

Limburg wil Duits behouden | with Lex Borghans, Raoul Haenbeukers, Roxanne Korthals & Anne Schepers. *Didactief*, 2016.

Bij twijfel: opwaarts | with Roxanne Korthals & Lex Borghans. *Didactief*, 2015.

Van basisschool naar middelbare school: hoe bepalen wat een leerling kan? | *De Cascade*, Magazine of Stichting Cosmicus, 11(28), 22-23, 2014.

Een nieuw curriculum voor de middelbare school | with Lex Borghans. *Economisch Statistische Berichten*, 99(4692):,516-519, 2014.

Opbrengstgericht werken | Chapter in Lex Borghans, Ruud Klarus & Ib Waterreus (eds.), *Wat is goed onderwijs? Bijdragen uit de onderwijseconomie*, Den Haag: Boom/Lemma, 2014.

Eindtoets PO: De vreugde van het onderwijs | with Lex Borghans. *Didactief*, 2013

Wie zorgt voor Zekerheid? | with Paul de Beer, Marcel Hoogenboom & Lucy Kok. Den Haag: SDU, 2009

Flexicurity in Nederlandse cao's: een strategie om de arbeidsparticipatie te verhogen? | with Hester Houwing. *TPE Digitaal*, 3(2), 126-141, 2009.

Crisis op de arbeidsmarkt | *Zeggenschap*, maart, 6-8, 2009.

Pensioenprikkels en arbeidsparticipatie van oudere werknemers | *Economisch Statistische Berichten*, bijdrage Arbeidsmarkt Statistiek, 94(4555), 144, 2009.

Flexicurity en de Gouden driehoek | with Paul de Beer. *Tijdschrift voor Arbeidsvraagstukken*, 24(4), 363-380, 2008.

Concurrentie tussen arbeidsparticipatie en maatschappelijke participatie | with Ronald Dekker & Didier Fouarge. *Economisch Statistische Berichten*, 93(4538), 404-407, 2008.

Enkele overwegingen omtrent evenwicht in het ontslagrecht en de arbeidsmarkt | with Ferdinand Grapperhaus. *Sociaal Recht*, November, 351-358, 2007.

Participatietop of participatieflop | with Anne Gielen. *Economisch Statistische Berichten*, 92(4514), 438-439, 2007.

Ontslagbescherming in CAOs | *Economisch Statistische Berichten*, 92(4509), 274-276, 2007.

Vervroegde uittreding: determinanten en inkomensgevolgen | with Didier Fouarge & Bart Huynen. In Ester, Peter & Ruud Muffels (eds.), *Dynamiek en levensloop: Arbeidsmarkt in Transitie*. Tilburg: OSA, 2006.

Vervroegd pensioen in Europa | *Tijdschrift voor Arbeidsvraagstukken*, 22(2), 109-125, 2006.

Vervroegd uittreden of doorwerken? | with Didier Fouarge & Bart Huynen. *Sociaal-Economische Trends 2004-III*, CBS, Voorburg/Heerlen, 41-49, 2004. OSA-publication A207, Tilburg: OSA, 2004.

Reports

Samenwerken aan de sociale agenda van de provincie Limburg – rapportage vervolgmeting | with Rachelle Meisters, Polina Putrik, Daan Westra, Annemarie Künn, Femke Hamers, Klaasjan Hajema & Maria Jansen. FHML-CAPHRI, Maastricht University, 2022

Voltijdshoogbegaafdheidsonderwijs – een analyse van de langetermijneffecten | with Djoerd de Graaf, Henri Bussink & Desirée Houkema. Rapport no. 2022-27, SEO Economisch Onderzoek, Amsterdam.

Tieners en de coronatijd – een onderzoek in het Duits-Nederlands grensgebied | with Mark Levels & Per Bles, in Michael Weigand, Dirk Baier, Lothar Janssen, Mark Levels & Trudie Schils (eds.) *Jugendliche und die Coronazeit (JUNCO)*, Lern- und BildungsAkademie Monchengladbach, 2021.

Samen werken aan goed onderwijs: benut die complementariteit (English version Good education by collaborating: use that complementarity | Inaugural Lecture, Maastricht University, May 2021.

De langetermijneffecten van plusklassen | with Djoerd de Graaf, Henri Bussink & Desirée Houkema. SEO rapport no. 978-90-5220-036-1, SEO Economisch Onderzoek, Amsterdam, 2020.

Educational achievement and gender differences: the role of the interaction between emotional stability and conscientiousness | with Caroline Wehner. ROA research memorandum 2019/5, Maastricht: ROA, 2019.

The heterogeneous effects of early track assignment on cognitive and non-cognitive skills | with Maria Cotofan & Ron Diris. Tinbergen Institute discussion paper no. 2019-038, Rotterdam: Tinbergen Institute, 2019.

Decomposing achievement test scores into measures of cognitive and noncognitive skills | with Lex Borghans. SSRN working paper series, December 2018.

De rol van non-cognitieve vaardigheden bij kansenongelijkheid in het onderwijs | with Marjolein Muskens, Lex Borghans & Lin Rouvroye. Research project for the Ministry of Education, 2018.

Voortijdig schoolverlaten in Zuid-Limburg: Analyse van risicofactoren | with Ron Diris. Policy Report for Stichting Voortgezet Onderwijs Parkstad Limburg and Bureau Voortijdig SchoolVerlaten RMC39, Maastricht: Educatieve Agenda Limburg, 2017.

Personality and mental health: The role and substitution effect of emotional stability and conscientiousness | with Caroline Wehner & Lex Borghans, IZA discussion paper no. 10337, Bonn: IZA, 2016.

Does the teacher beat the test? The additional value of teacher assessment in predicting student ability | with Eva Feron & Bas ter Weel. IZA discussion paper no. 8768, Institute of Labour Studies: Bonn, 2015; CPB discussion paper no. 300, The Netherlands Bureau for Economic Research, Den Haag, 2015.

Doen wat ik kan! Leidt herhaalde zelfreflectie tot verbetering van motivatie en schoolprestaties? | with Eva Feron. Final report project OnderwijsBewijs, SBE-AE2, Maastricht University, 2015.

Gender gaps in primary school achievement: A decomposition into endowment and returns to IQ and non-cognitive factors | with Bart Golsteyn. IZA Discussion Paper no. 8201, Institute of Labour Studies: Bonn, 2014.

Non-standard employment patterns across occupations in the Netherlands | with Anne Gielen. IZA Policy Paper no. 77, Institute of Labour Studies: Bonn, 2014.

Een schets voor een adaptieve toets voor het funderend onderwijs | with Lex Borghans. Note for Ministry of Education, Maastricht University, 2011.

Leerlingen in het voortgezet onderwijs: Wie zitten daar? Hoe zitten ze in hun vel? Hoe slim zijn ze? | Kaans reports K04201102-04, SBE-AE2, Maastricht University. 2011.

Onderzoek onder leerlingen in het voortgezet onderwijs: Waarom? Hoe? | Kaans Rapport K04201101, SBE-AE2, Maastricht University, 2011.

Why do low-educated workers invest less in further training? | with Didier Fouarge & Andries de Grip. IZA Discussion paper no. 5180, Institute of Labour Studies: Bonn, 2010.

Prikkels voor postnitiële scholing van laagopgeleiden | with Didier Fouarge & Andries de Grip. Report written for ECBO, Expertcentre for Vocational Education, 's Hertogenbosch, 2009.

The effects of early retirement incentives on the training participation of older workers | with Didier Fouarge. OSA-publication A230, Tilburg, 2008.

From policy to practice: Assessing sectoral flexicurity in the Netherlands | with Hester Houwing. AIAS working paper no. 68, Amsterdam Institute of Advanced Labour Studies: Amsterdam, 2008.

Does it matter who takes responsibility? The distribution of responsibility for social security and labour market policy in five countries | with Paul de Beer. AIAS working paper no. 57, Amsterdam Institute of Advanced Labour Studies: Amsterdam, 2007.

Employment protection in collective labour agreements | AIAS working paper no. 56, Amsterdam Institute of Advanced Labour Studies: Amsterdam, 2007.

Distribution of responsibility for social security and labour market policy: country study the Netherlands | AIAS working paper no. 49, Amsterdam Institute of Advanced Labour Studies: Amsterdam, 2007.

The new trade union: another 100 years? | with Roos van Os van den Abeelen. Conference Report, AIAS, Amsterdam, 2007.

Activation and social exclusion in the Netherlands | Paper prepared for the Friedrich Ebert Stiftung, Bonn, 2007

Early retirement patterns in Germany, the Netherlands and the United Kingdom | AIAS working paper no. 44, Amsterdam Institute of Advanced Labour Studies: Amsterdam, 2006.

Loon en werk na werkloosheid | with Didier Fouarge & Marcel Kerkhofs. OSA-publication A221, OSA: Tilburg, 2006.

The Ageing Workforce and Labour Market Mobility: Do Mobility Patterns Differ Between Age Groups and Welfare Regimes? | with Ruud Muffels. European Panel Analysis Group working paper no. 44, Institute for Social and Economic Research, University of Essex, 2003

For blogs, columns, factsheets, advices or opinion articles see trudieschils.nl.

Media coverage

Rijke scholen' bieden hoop in Limburg: 'Positieve resultaten | *L1 Nieuws* – April 2026.

Zelf waren de vier kinderen nog het meest verbaasd over het eindresultaat, over hun nieuwe vaardigheden | *De Limburger* – April 2026.

Kinderen leren nieuwe vaardigheden en hervinden trots door Rijke Schooldag in het basisonderwijs | *De Limburger* – April 2026.

Provincie trekt ton uit voor onderzoek en onderwijs Limburgse taal | *L1 Nieuws* – March 2026.

Onderwijsmonitor Limburg: 'Ik heb geleerd dat ik ergens goed in ben' | *Gelijke Kansen Alliantie* – September 2025.

Drie jaar Nationaal Programma Heerlen-noord: er zijn al lichtpuntjes | *L1 Nieuws* – April 2025.

Meer onderwijssucces - De magie van harde en zachte data | *AVS Schoolleiders Magazine* – Juni 2024.

Plat praten op de peuterspeelzaal | *Observant* – May 2024.

Wie wil er voor de klas? | Book by journalist Patricia Veldhuis containing quote of me based on my research – October 2023.

Lehrer legen ungleiche Kriterien bei der Bewertung von Hochbegabung an | *Bildungsklick* – February 2023.

Teachers apply unequal criteria when assessing giftedness, finds study | *Physorg* – February – 2023.

De coronaklap dreunt steeds harder door in de klas, ondanks extra geld | *Financieel Dagblad* – November 2022.

Op kamp met groep 8: 'wie als eerste slaapt, wort geprankt' | *NRC Handelsblad* – July 2022.

Tweetaligheid verwaarlozen is zonde | *Observant* – July 2022.

Verhalen over werkdruk maken het onderwijs onaantrekkelijk | *Science Guide* – June 2022.

Kinderen die dialect spreken, scoren hoger bij Cito toets begrijpend lezen | *Limburger* – April 2022.

Slechte taal- en rekenvaardigheid: 'Corona laat sporen na' | *L1 Limburg* – April 2022.

Het wordt geen Einstein, zegt de vader van Maureen | *NRC Handelsblad* – April 2022.

Commissie: scholen moeten altijd open blijven, óók als er een virus rondwaart | *Trouw* – January 2022.

Adviescommissie: houd scholen te allen tijden open | *Algemeen Dagblad* – January 2022.

Mentale welzijn scholieren onder druk: 'Ze worden apathisch' | *Nieuwsuur* – December 2021.

Hoogleraar en jeugdpsychiater over onderwijs in coronatijd | *Limburger* – August 2021.

Universitair diploma is niet voor ieder slim kind weggelegd | *NRC Handelsblad* – July 2021.

Leerachterstanden door Corona | *L1 De Stemming* – May 2021.

Leerachterstand in onderwijs na coronajaar: Echte probleem is het lerarentekort | *Limburger* – May 2021.

Corona heeft meer impact op Limburgse tieners dan op Duitse | *Limburger* – May 2021.

Onderwijssector heeft nog te weinig grip op vaardigheden studenten | *Science guide* – May 2021.

Nationaal Programma Onderwijs | *L1* – May 2021.

Acht Limburgse ideeën om de leerachterstanden weg te werken | *Limburger* – April 2021.

Goed onderwijs door Educatieve Agenda Limburg | *UMagazine* – April 2021.

Woede en onbegrip over sluiting van basisscholen | *Trouw* – December 2020.

Slimme leerling met plusklas op basisschool haalt vaker in één keer vwo | *Algemeen Dagblad* – October 2020.

Wellbeing of students during the COVID-19 pandemic | *L1 Centraal (live)* – August 2020.

Wellbeing of students during the COVID-19 pandemic | *L1 Centraal* – August 2020.

Studieachterstand en eenzaamheid door sluiting scholen | *Trouw & RTL News* – August 2020.

Een derde scholieren maakt zich zorgen over prestaties door sluiting scholen | *NRC Handelsblad* – August 2020.

Scholieren somberder over slagingskansen | *NOS* – August 2020.

Wellbeing of students during the COVID-19 pandemic | *BNR radio & radio 1* – August 2020.

Studieachterstand en eenzaamheid door sluiting scholen & Vmbo-ers zijn hard getroffen | *De Telegraaf* – August 2020.

Gemengde gevoelens over lockdown bij scholieren in Limburg | *Limburger* – August 2020.

Projekt Junco gestart: Untersuchung Jugendlicher in der Corona-Krise | *LokalKlick.eu* – July 2020.

Kansenongelijkheid: achtstegroepers van basisscholen Parkstad en Noord-Limburg krijgen lagere schooladviezen | *Limburger* – February 2020.

Wie sjoen os Twitter is | *Limburger* – September 2019.

Niets is superieur bij het schooladvies | *NRC Handelsblad* – April 2019.

Houd de jongeren langer vast | *Limburger* – March 2018.

Limburg mist miljoenen aan onderwijsgeld | *Limburger* – March 2018.

Eén ideaal curriculum voor alle leerlingen? | *De Observant* – January 2016.

Op school gaat het om wie je bent | *NRC Handelsblad* – January 2016.

Wat moeten we met onderwijs 2032? | *Didactief* – March 2016.

Schooladvies bepaalt | *Limburger* – April 2015.

El Cansancio durante el examen lastra los resultados de Espana en la prueba PISA | *El Diaro* – October 2014.

Slimmer en gelukkiger | *Limburger* – June 2014.

Unskilled workers stay unskilled | *Economic Logic* – January 2011.

FNV voert achterhoedegevecht | *Het Algemeen Dagblad* – March 2009.

Van werk naar werk gaat niet vanzelf | *Het Algemeen Dagblad* – January 2009.

Vrijwilligerswerk onder druk door kabinetsbeleid | *Het Nederlands Dagblad* – June 2008.

Onder economen is discussie ontslagrecht niet gesloten | *De Staatscourant* – December 2007.

Oudere als eerste de klos bij ontslag | *Het Algemeen Dagblad* – July 2007.

Ontslag in Nederland is vooral veel gedoe | *Het Financieele Dagblad* – June 2007.

Hoe goed is het wonen en werken in België | *Trends* – March 2007.

Bedrijven hebben wegwerpcultuur | *Het Nederlands Dagblad* – December 2005.

Langer werken dankzij training | *Trouw* – December 2005.

Prepensioen | *Het Nederlands Juridisch Dagblad* – December 2005.

Zwitserlevengevoel | *Binnenlands Bestuur* – December 2005.

Het zal je kind maar wezen | *Kub ter Visie* – 1998.